



Y1/2

The World and I





Literacy

We loved learning all about penguins. Take a look at our amazing non-chronological reports.

Appearance
Penguins have wobbly feet to swim. Penguins have a long beak to catch penguins eat fish.

Habitat
Penguins live in the southern Hemisphere. The weather is snowy and windy. Antarctica.

Diet
Penguins eat krill and fish. Penguins are Karavans. they catch their prey with their beaks.

Fun Facts
Did you know penguins are friendly to humans? Did you know penguins are a birds but they can't fly?

Well done! A great report.

Appearance
their feathers are black and white.

Habitat
Live in the southern hemisphere.

Diet
Beak opens wide to swallow fish.

Fun Facts
they can't fly.

Appearance
Penguins have wobbly feet. They have sharp claws. Penguins have wings.

Habitat
Penguins live in the Antarctica. It is very cold. It is freezing.

Diet
Penguins get food from the sea. Penguins drink the sea. They catch their food with their beaks. They eat fish.

Fun Facts
Did you know penguins have blubber? Did you know the fairy is the smallest?

Well done! A great report. Sp. finger spaces.

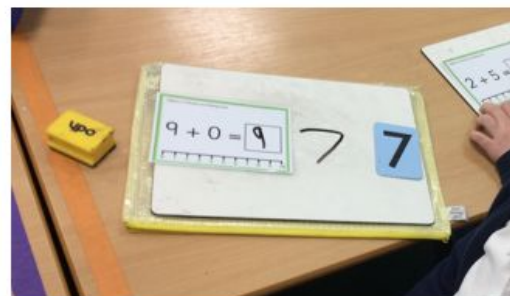
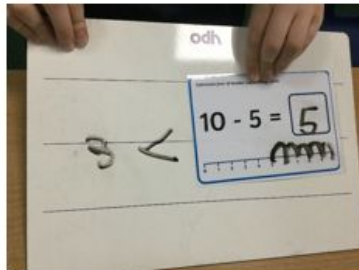


Maths



W.C. Monday 23rd November 2020

This week in maths we have been comparing statements.

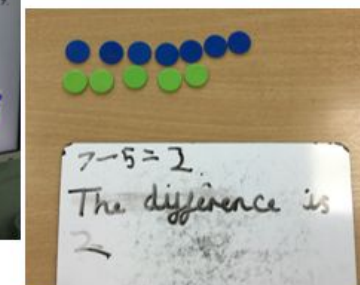
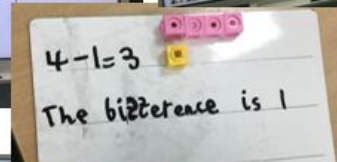


Key questions

- What does greater mean?
- What does less than mean?
- How do we know that $__ + __$ is greater than $__$?
- How do we know that $__ - __$ is less than $__$?
- What steps do we need to take to help us solve this problem?

Friday 20th November 2020

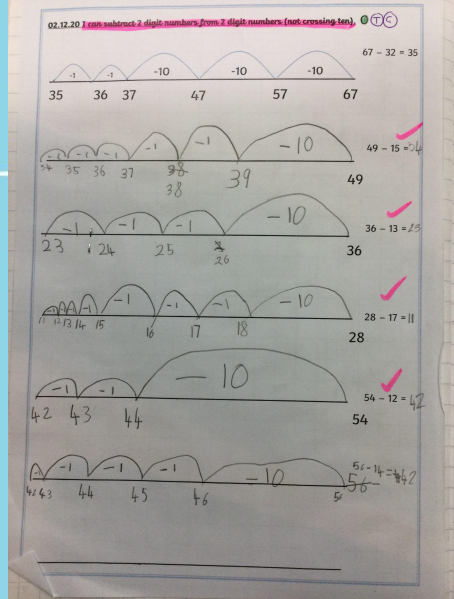
We have been exploring finding the difference as a form of subtraction. We have been using our counting back skills.



Key questions

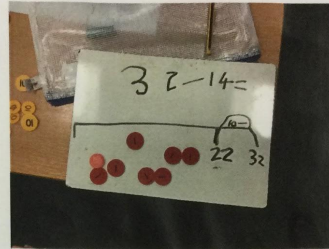
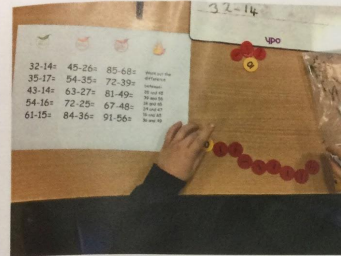
- Who has more? How do you know? How many more does $__$ have?
- What does difference mean? How do you know? What strategy can we use to help us find the difference?
- How can we complete the sentences?

In Y1 maths, we have been learning to represent and compare numbers to twenty. We have also learnt how to add and subtract numbers to twenty.



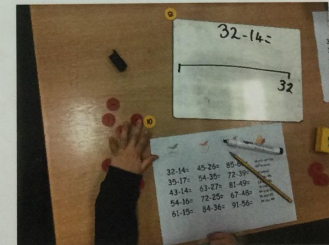
03.12.20 I can subtract 2 digit numbers from 2 digit numbers (crossing ten).

We looked at subtracting 2 digit numbers from 2 digit numbers where we were crossing ten. We used place value counters and base ten to help us exchange and regroup. We also used numberlines when we felt more confident.

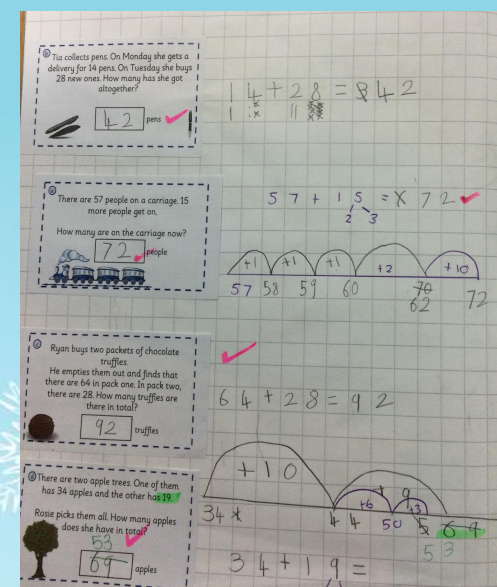
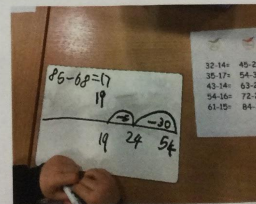


We chose which chilli challenge we felt most confident to start on.

Mild 🌱	Medium 🌱🌱	Hot 🌱🌱🌱	Extra Hot 🌱🌱🌱🌱
32-14=	45-26=	85-68=	Work out the difference between:
35-17=	54-35=	72-39=	28 and 45
43-14=	63-27=	81-49=	39 and 56
54-16=	72-25=	67-48=	18 and 65
61-15=	84-36=	91-56=	34 and 47
			16 and 85
			36 and 49



We used a numberline when we felt confident.

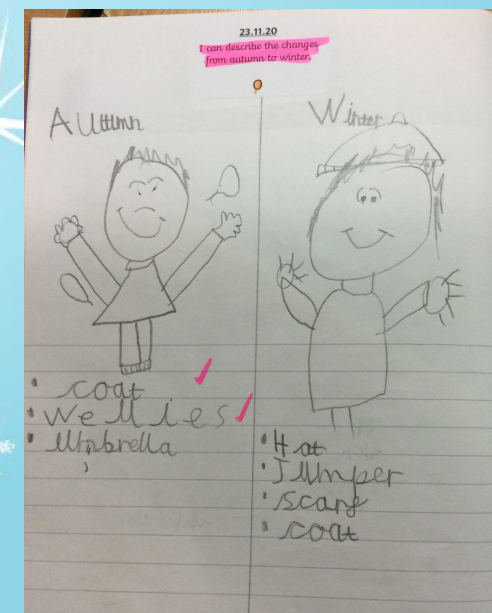
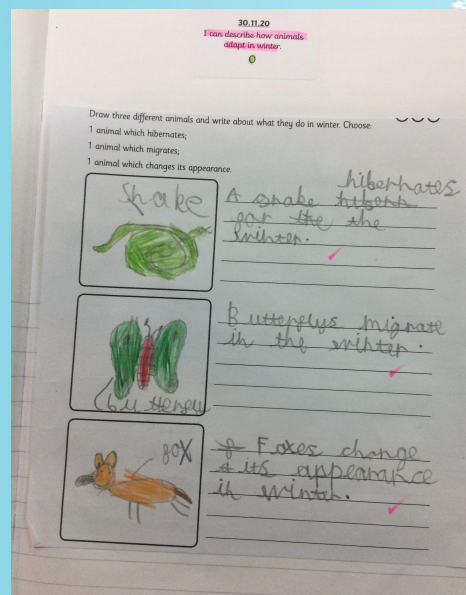
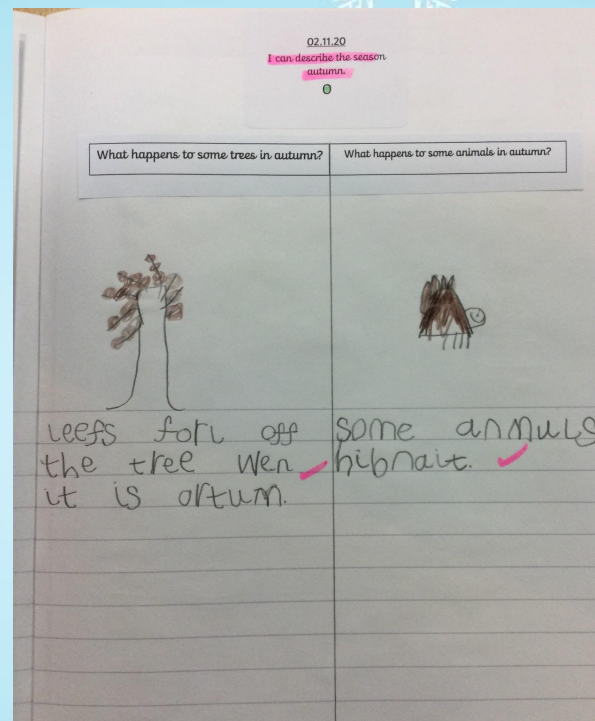


In Y2 maths, we have enjoyed learning how to add and subtract. We have also been used tally charts and pictograms.



Science

We have learnt about the different seasons but focused especially on autumn and winter this half term.






Geography

We have looked at hot and cold climates. We have learnt about the differences between the Arctic and Antarctic, and which animals live there.

I can identify facts about Antarctica.

O




antartic

In the ~~one~~ there is a small amount of animals
e. Snails, Penguins, Killer whales, fish, seals and
to some birds. I noted of the northern light
the north pole its the southern lights in
south pole. A Antarctica is the freezingest
in the world and if you went there
would probably freeze. Some famous
photos once tried to go but they failed
only people who live there are say
scientists. Scientists stay in
the place in the antartic. The A.

I can identify facts about the Arctic.

O

you can see make
hoos. ✓



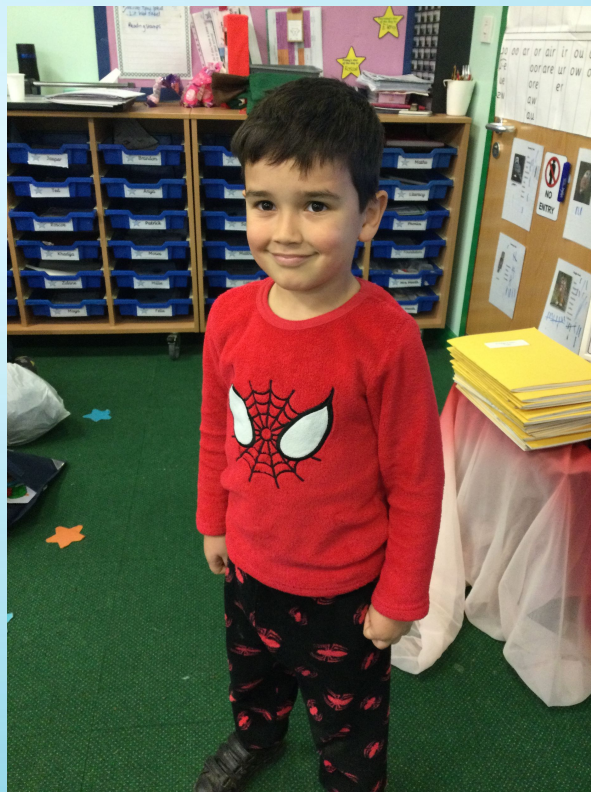
You can see Puffin
and ~~hedge~~ Polar
bear. ✓

huskys
Pole
people
on sleds. ✓

You can see
nothurlits
at the
Arctic. ✓



Winter Day



Nativity

