

1

1 Old St Oswald's church, St Oswald's road

Now a private residence, this was the original St Oswald's church which was linked to the school. It was replaced in 1866 by a large new building in Main Street, where you see St Oswald's church today. John Key, founder of the school, was buried at the old St Oswald's church in 1778.



3 Fulford Lodge, Heslington Lane

Home to Amelia Cholmley who funded the second school site.



2 St Oswald's church, Main Street

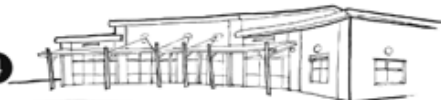
School logbooks show that the school and the church have always been closely linked from the very outset.

Can you spot the memorial to Amelia Cholmley? Look above the organ!



4 Current site of St Oswald's CE Primary School, School Lane

The school moved to its present site in 1930 and was rebuilt in 2006. In 2021 as part of the 250th birthday celebrations, a bench and garden area was built to showcase the original school foundation stones from 1771 and 1846.



5 Scout Hut and Social Hall, School Lane

The second site for the school. Additional buildings for girls and infants were built in 1844 and 1846 respectively on what is now School Lane and is still used as Fulford Scout Hut. The school buildings were added in 1866 and one building is still in use as the village Social Hall.



7 Water Fulford Hall, Naburn Lane

John Key inherited the property from his cousin. In those days, Fulford was two villages; Fulford Gate and Water Fulford and John Key became Lord of the Manor of both. He used some of his wealth to found the first free school in Fulford, which would later become St Oswald's CE Primary School.



6 Old School House, No 27 Fulford Main Street

The original site for the school, founded in 1771 by John Key of Water Fulford Hall. In 1835 it educated 26 boys and 6 girls. The two large arches may once have been windows, flooding daylight in to the classroom.

Can you spot the dedication stone to the school?



St Oswald's School Walking Trail

Illustrations by Ian Hayton
Design by Henrietta Sampson