



## SAFEGUARDING & CHILD PROTECTION POLICY

### Academic Year 2025-26

---

Last Reviewed	December 2025
Next Review date	December 2026

All members of staff have received a copy of this policy alongside a copy of KCSIE (Part One) and the Staff Code of Conduct.

All members of staff have undertaken annual refresher training in line with this policy.

Changes made for the 2025/26 academic year are highlighted in yellow for ease of reference. Staff and governors **must**, however, read the policy in its entirety.

## **Contents**

<b>1. AIMS</b>	<b>5</b>
<b>2. LEGISLATION AND GUIDANCE</b>	<b>5</b>
<b>3. DEFINITIONS</b>	<b>7</b>
<b>4. EQUALITY STATEMENT</b>	<b>7</b>
<b>5. ROLES AND RESPONSIBILITIES</b>	<b>8</b>
<b>7. OPPORTUNITIES TO TEACH SAFEGUARDING – PREVENTATIVE CURRICULUM</b>	<b>17</b>
<b>8. OUR ROLE IN SUPPORTING CHILDREN</b>	<b>17</b>
<b>9. CHILDREN WITH SPECIAL EDUCATIONAL NEEDS, DISABILITIES, OR HEALTH ISSUES</b>	<b>17</b>
<b>10. CHILDREN AT RISK OF SPECIFIC FORMS OF ABUSE</b>	<b>18</b>
<b>11 Remote Learning and Remote Welfare</b>	<b>19</b>
<b>12 FEMALE GENITAL MUTILATION: THE MANDATORY REPORTING DUTY</b>	<b>19</b>
<b>13 RADICALISATION AND TERRORISM</b>	<b>19</b>
<b>14 CHANNEL</b>	<b>20</b>
<b>15 CHILD ON CHILD ABUSE</b>	<b>20</b>
<b>16 SHARING NUDES AND SEMI NUDES</b>	<b>22</b>
<b>17 CHILDREN WHO ARE ABSENT FROM EDUCATION</b>	<b>23</b>
<b>18 A SAFER SCHOOL CULTURE</b>	<b>23</b>
<b>19 Online safety and the use of mobile technology</b>	<b>24</b>
<b>20 Safer Recruitment, selection and pre-employment vetting</b>	<b>25</b>
<b>21 MANAGING ALLEGATIONS OR SAFEGUARDING CONCERNS AGAINST A MEMBER OF STAFF OR PERSON IN SCHOOL PROCEDURES.</b>	<b>26</b>
<b>21 TRAINING AND SUPPORT</b>	<b>30</b>
<b>22 CHILD PROTECTION RECORDS</b>	<b>31</b>
<b>23 CHILDREN’S AND PARENTS’ ACCESS TO CHILD PROTECTION FILES</b>	<b>33</b>
<b>24 ARCHIVING</b>	<b>33</b>
<b>25 SAFE DESTRUCTION OF THE PUPIL RECORD</b>	<b>34</b>
<b>26 SAFEGUARDING RESPONSIBILITIES FOR PUPILS IN TRANSITION</b>	<b>34</b>
<b>Appendix 1: Definitions and indicators of abuse</b>	<b>35</b>
<b>APPENDIX 2 RESPONDING TO CHILDREN WHO REPORT ABUSE.</b>	<b>38</b>

This Safeguarding & Child Protection Policy is available on the school website and is reviewed and ratified annually by the governing body or as events, or legislation requires. Any deficiencies or weaknesses identified will be remedied without delay.

# KEY SAFEGUARDING CONTACTS

## Keeping children safe

If you have any concerns about the welfare or safety of any child in school, please let one of these people know **immediately**



Mrs J Dunne  
Headteacher  
Designated Safeguarding Lead



Mr J Barker  
Deputy Headteacher  
Deputy Designated Safeguarding Lead



Mrs A Usher  
Safeguarding Governor  
Tel: 01904 555421

**If necessary, contact the York Safeguarding Hub directly on 01904 551900**

**Safeguarding is everyone's responsibility!**

St Oswald's Child Protection and Safeguarding Advice  
Contact List – September 2025

Multi Agency Safeguarding Hub (MASH)		01904 551900 01609 780780 (out of hours emergency) e-mail: <a href="mailto:childrensfrontdoor@york.gov.uk">childrensfrontdoor@york.gov.uk</a>
Children's Services	Referral & Assessment Manager or Duty Social Worker	01904 551900 0845 0349417 (after 5pm)
Attendance Advisor	Mr Mark Smith	01904 555187 e-mail: <a href="mailto:mark.smith@york.gov.uk">mark.smith@york.gov.uk</a>
Director of Children's Safeguarding	Danielle Johnson	01904 554961 e-mail: <a href="mailto:danielle.johnson@york.gov.uk">danielle.johnson@york.gov.uk</a>
Local Authority Designated Officer (LADO)	Debra Lane	01904 551783 e-mail: <a href="mailto:lado@york.gov.uk">lado@york.gov.uk</a> <b>NB only email using a secure 'york.gov.uk' email account</b> 0300 131 2131. Out of hours number.
City of York Council ICT officer (issues relating to Internet filtering etc.)	Mr Leigh Farrow	01904 554377 email: <a href="mailto:leigh.farrow@york.gov.uk">leigh.farrow@york.gov.uk</a>

**St Oswald's CE Primary School is fully committed to safeguarding and promoting the welfare of children and young people and expects all staff, volunteers, contractors and visitors to share this commitment.**

**All staff** refers to all adults, volunteers (including governors) or students on placement, working in any capacity in the school or in activities organised by the school which brings them into contact with pupils of the school.

**Child Protection** refers to the multi-agency arrangements to identify and protect children who are, or may be at risk of, suffering significant harm.

**Safeguarding** refers to the protection, safety and promotion of the welfare of all pupils including when in off-site provision or activities and using ICT. This includes the building of resilience and awareness of risk through the formal and informal curriculum.

**Child** is any pupil under the age of 18.

## **Glossary**

- DSL            Designated Safeguarding Lead
- DDSL        Deputy Designated Safeguarding Lead
- SENDCo     Special Education Needs and Disabilities Coordinator
- DT            Designated Teacher for Looked After and previously Looked After Children.
- PSHE        Personal, social, health and economic education
- RSHE        Relationships, sex and health education
- CSWS        Children's' Social Work Services
- KCSiE        Keeping Children Safe in Education (DfE, September 2024)
- CYSCP        City of York's Safeguarding Children Partnership

## **Visitors to school**

All visitors must sign in on arrival and collect a visitor's lanyard. They will be referred to read the School Information on our electronic sign-in system, which outlines Child Protection and Safeguarding procedures in school and how to report any concerns regarding a child/young person or another adult in school. Visitor lanyards must be worn at all times when in school. All visitors must sign in. Staff must ensure that visitors to school are supervised as appropriate and the requisite pre-employment checks have been completed as referenced in Part 3 of KCSiE. All contractors must follow the school's signing in arrangements as set out in contractual commissioning agreements.

## 1. Aims

### 1.1 The school aims to ensure that:

- Appropriate action is taken in a timely manner to safeguard and promote children's welfare
- All staff are aware of their statutory responsibilities with respect to safeguarding, identifying children in need of early help, at risk of harm or those that have been harmed
- Staff are properly trained in recognising and reporting safeguarding issues
- A culture of vigilance is created and maintained to ensure that we will also act in the best interests of children to protect them online and offline
- Systems for reporting abuse are well promoted, easily understood and easily accessible for children

### 1.2 The Governing Body and staff of St Oswald's CE Primary School (hereinafter referred to as "the school") take as our first priority the responsibility to safeguard and promote the welfare of our pupils, to minimise risk and to work together with other agencies to ensure rigorous arrangements are in place within our school to identify, assess and support those children who are suffering harm and to keep them safe and secure whilst in our care.

### 1.3 The responsibilities set out in this policy apply (as appropriate) to all members of the school community including pupils, staff, governors, visitors/contractors, volunteers, supply staff, students on placement and trainees working within the school. It is fully incorporated into the whole school/college ethos and is underpinned throughout the teaching of the curriculum, within RHE and within the safety of the physical environment provided for the pupils.

## 2. Legislation and guidance

### 2.1 This policy is based on the Department for Education's statutory guidance, [Keeping Children Safe in Education \(KCSIE\) 2025](#) and [Working Together to Safeguard Children \(WTTSC\) 2023](#) and the [Governance Handbook](#). We comply with this guidance and the procedures set out by the Safer Children York partnership (SCY).

### 2.2 This policy is also based on the following legislation and guidance:

- Section 175 of the [Education Act 2002](#), which places a duty on schools and local authorities to safeguard and promote the welfare of pupils
- [The School Staffing \(England\) Regulations 2009](#), which set out what must be recorded on the single central record and the requirement for at least one person on a school interview/appointment panel to be trained in safer recruitment techniques
- [The Children Act 1989](#) (and [2004 amendment](#)), which provides a framework for the care and protection of children
- Section 5B(11) of the Female Genital Mutilation Act 2003, as inserted by section 74 of the [Serious Crime Act 2015](#), which places a statutory duty on teachers to report to the police where they discover that female genital mutilation (FGM) appears to have been carried out on a girl under 18
- [Statutory guidance on FGM](#), which sets out responsibilities with regards to safeguarding and supporting girls affected by FGM
- [The Rehabilitation of Offenders Act 1974](#), which outlines when people with criminal convictions can work with children
- Schedule 4 of the [Safeguarding Vulnerable Groups Act 2006](#), which defines what 'regulated activity' is in relation to children

- Statutory [Guidance on the Prevent duty](#), which explains schools' duties under the Counter-Terrorism and Security Act 2015 with respect to protecting people from the risk of radicalisation and extremism
- Guidance for safer working practice for those working with children and young people in education settings (GSWP) (Safer Recruitment Consortium Feb 2022) <https://c-cluster-110.uploads.documents.cimpress.io/v1/uploads/d71d6fd8-b99e-4327-b8fd-1ac968b768a4~110/original?tenant=vbu-digital>
- The [Human Rights Act 1998](#), which explains that being subjected to harassment, violence and/or abuse, including that of a sexual nature, may breach any or all of the rights which apply to individuals under the [European Convention on Human Rights](#) (ECHR)
- [The Equality Act 2010](#), which makes it unlawful to discriminate against people regarding particular protected characteristics (including age, disability, gender reassignment, marriage and civil partnership, race, religion or belief, sex and sexual orientation). This means our governors and headteacher should carefully consider how they are supporting their pupils with regard to these characteristics. The Act allows our school to take positive action to deal with particular disadvantages affecting a specific group of pupils (where we can show it's proportionate). This includes a duty to make reasonable adjustments for disabled pupils. For example, it could include taking positive action to support girls where there's evidence that they're being disproportionately subjected to sexual violence or harassment
- [The Public Sector Equality Duty \(PSED\)](#), which explains that we must have due regard to eliminating unlawful discrimination, harassment and victimisation. The PSED helps us to focus on key issues of concern and how to improve pupil outcomes. Some pupils may be more at risk of harm from issues such as: sexual violence, homophobic, biphobic or transphobic bullying or racial discrimination
- [The Childcare \(Disqualification\) and Childcare \(Early Years Provision Free of Charge\) \(Extended Entitlement\) \(Amendment\) Regulations 2018](#) (referred to in this policy as the '2018 Childcare Disqualification Regulations') and [Childcare Act 2006](#), which set out who is disqualified from working with children
- This policy also meets the requirements relating to safeguarding and welfare in the [statutory framework for the Early Years Foundation Stage](#)
- Our local agreed multi-agency procedures that have been put in place by [City of York Safeguarding Children Partnership](#)

The following documentation has also been considered:

- [Sharing nudes and semi-nudes: advice for education settings working with children and young people \(Department for Digital, Culture, Media & Sport and UK Council for Internet Safety 2024\)](#)
- [Safeguarding and remote education during coronavirus \(COVID-19\) \(DfE, 2021b\)](#)
- [Children Missing Education – Statutory guidance for local authorities \(DfE September 2016\)](#)
- [When to call the police – Guidance for schools and colleges \(NPCC – 2020\)](#)
- [Education and Training \(Welfare of Children\) Act 2021](#)

Schools and colleges are under a statutory duty to cooperate with the published CYSCP arrangements. This policy conforms to locally agreed inter-agency procedures. It is available on the CYSCP website

<https://www.saferchildrenyork.org.uk/cyscp-1/cyscp#losaar>. It must be read in conjunction with other relevant policies and procedures and [KCSiE \(DfE 2025\)](#). <https://www.gov.uk/government/publications/keeping-children-safe-in-education--2>

This policy should also be read in conjunction with the school's Online Safety Policy, The Acceptable Use Policies for Staff, Students and Visitors which set out the acceptable use of ICT, including the use of 3/4G devices on school site.

### 3. Definitions

- **Safeguarding and promoting the welfare of children** means:
  - Providing help and support to meet the needs of children as soon as problems emerge
  - Protecting children from maltreatment, whether that is within or outside the home, including online
  - Preventing impairment of children's mental or physical health or development
  - Ensuring that children grow up in circumstances consistent with the provision of safe and effective care
  - Taking action to enable all children to have the best outcomes
- **Child protection** is part of this definition and refers to activities undertaken to prevent children suffering, or being likely to suffer, significant harm. **This includes harm that occurs inside or outside of the home, including online.**
- **Abuse** is a form of maltreatment of a child, and may involve inflicting harm or failing to act to prevent harm. Appendix 1 explains the different types and indicators of abuse.
- **Neglect** is a form of abuse and is the persistent failure to meet a child's basic physical and/or psychological needs, likely to result in the serious impairment of the child's health or development. Appendix 1 defines neglect in more detail.
- **Sharing of nudes and semi-nudes** (also known as sexting or youth-produced sexual imagery) is where children share nude or semi-nude images, videos or live streams. This also includes pseudo-images that are computer-generated images that otherwise appear to be a photograph or video.
- **Children** includes everyone under the age of 18.

### 4. Equality statement

4.1 Some children have an increased risk of abuse, and additional barriers can exist for some children with respect to recognising or disclosing it. We are committed to anti-discriminatory practice and recognise children's diverse circumstances. We ensure that all children have the same protection, regardless of any barriers they may face.

4.1 We give special consideration to children who:

- are disabled or have certain health conditions and have specific additional needs.
- have special educational needs (whether or not they have a statutory Education, Health and Care plan (EHCP))
- have a mental health need.
- are a young carer.
- are showing signs of being drawn into anti-social or criminal behaviour, including gang involvement and association with organised crime groups or county lines.
- are frequently missing/goes missing from education, home or care.



- have experienced multiple suspensions, are at risk of being permanently excluded from schools, colleges and in Alternative Provision or a Pupil Referral Unit.
- are at risk of modern slavery, trafficking, sexual and/or criminal exploitation.
- are at risk of being radicalised or exploited.
- have a parent or carer in custody or is affected by parental offending.
- are in a family circumstance presenting challenges for the child, such as drug and alcohol misuse, adult mental health issues and domestic abuse.
- are misusing alcohol and other drugs themselves.
- are at risk of so-called 'honour'-based abuse such as Female Genital Mutilation or Forced Marriage.
- are a privately fostered child.

## 5. Roles and responsibilities

5.1 Safeguarding and child protection is **everyone's** responsibility. This policy applies to all staff (including those not directly employed by the school), volunteers, contractors and governors in the school. Our policy and procedures also apply to extended school and off-site activities. All staff are expected to read this policy as part of their induction arrangements as well as the documents referenced in section 5.2 (All staff) below and any updates therein.

### 5.2 All staff

5.2.1 All staff working directly with children will read and understand their statutory responsibilities outlined in Part 1 and Annex B of the Department for Education's statutory safeguarding guidance, [Keeping Children Safe in Education](#), and review this guidance at least annually.

5.2.2 Staff who do not work directly with children will read either Part 1 or Annex A as determined by the DSL dependent on their roles, responsibilities and contact with children.

5.2.3 All staff will be aware of:

- Our systems which support safeguarding, including reading and understanding their professional responsibilities as outlined in Guidance for Safer Working Practice (2022) understanding the role of the designated safeguarding lead (DSL/DDSL), reading and understanding the school behaviour policy and their safeguarding responses to children who go missing from education during the school day or otherwise and reading and understanding the school's online safety policy.
- The early help process and their role in it, including being alert to emerging problems that may warrant Early Help intervention, particularly those identified in Part 1 of KCSiE. All staff should be reporting emerging problems that may warrant early help intervention by discussing with the Headteacher or another member of the Senior Leadership Team.
- That children's behaviours can be indicative of their emotional wellbeing and can be linked to mental health. They should be aware of behaviours that may communicate that poor wellbeing can be an indicator of factors such as abuse, neglect or exploitation. Staff should understand that children's experiences of



abuse, neglect, trauma and adverse childhood experiences can impact on children's mental health, behaviour & education.

- The process for making referrals to local authority children's social work service (CSWS) and for statutory assessments that may follow a referral, including the role they might be expected to play. Fig 1a: **Summary of in-school procedures to follow where there are concerns about a child** illustrates the procedure to follow if you have concerns about a child's welfare. Wherever possible, speak to the DSL, DDSL or headteacher (in the absence of a DSL) first to agree a course of action. In the absence of a DSL or headteacher being available, staff must not delay in directly contacting children's social work Duty and Advice team or the police if they believe a child is at immediate risk of significant harm.
- Our work with partner agencies is always focused on securing the best outcomes for children. Wherever possible, any requests for support or safeguarding concerns will be made by the Designated Safeguarding Lead to the **York Multi-Agency Safeguarding Hub (MASH) (telephone 01904 551900.)** If a child already has an allocated social worker, the school will contact that social worker immediately, or, if they are unavailable, the team manager responsible for the case.
- What to do if they identify a safeguarding issue or a child tells them they are being abused, neglected or exploited, including specific issues such as Female Genital Mutilation (FGM), and how to maintain an appropriate level of confidentiality while liaising with relevant professionals.
- In school procedures for recording any cause for concerns and passing information on to DSLs in accordance with school's recording systems.
- The signs of different types of abuse and neglect, as well as specific safeguarding issues, such as child sexual exploitation (CSE), child criminal exploitation (CCE), FGM, radicalisation, child-on-child sexual abuse and serious and violent crime. All staff to be aware safeguarding incidents/ behaviours can occur outside school or college or be associated with outside factors. CSE and CCE are forms of abuse and both occur where an individual or group takes advantage of an imbalance in power to coerce, manipulate or deceive a child into sexual or criminal activity.
- Children absent from education or missing/absconding during the school day can also be a sign of a range of safeguarding concerns including sexual abuse, sexual exploitation or child criminal exploitation.
- Children may not feel ready or know how to tell someone that they are being abused, exploited, neglected, and/or they may not recognise their experiences as harmful.
- New and emerging threats, including online harm, grooming, sexual exploitation, criminal exploitation, radicalisation, and the role of technology and social media in presenting harm
- The fact that children who are (or who are perceived to be) lesbian, gay, bisexual or gender questioning (LGBTQ+) can be targeted by other members of school, including children.

- Be aware of the arising risks regarding online use and AI. Ensure there is an appropriate level of understanding to educate children around the misinformation and disinformation available online.
- Be aware of the risks regarding online use and potential exposure to conspiracy theories and have an awareness of how to educate children regarding this.

### 5.3 The designated safeguarding lead (DSL) and deputy designated staff.

- 5.3.1 Our DSL is **Mrs Jemma Dunne (Headteacher)**. The DSL takes lead responsibility for child protection and wider safeguarding (including online safety and understanding the filtering and monitoring systems which are in place). Refer to DfE Guidance [Meeting digital and technology standards in schools and colleges - Filtering and monitoring standards for schools and colleges - Guidance - GOV.UK \(www.gov.uk\)](https://www.gov.uk/guidance/meeting-digital-and-technology-standards-in-schools-and-colleges)
- 5.3.2 The optimal scenario is to have a trained DSL or DDSL available on site. Where this is not possible (e.g., due to illness), a trained DSL or DDSL will be available to be contacted via phone or online video – for example when working from home.
- 5.3.3 During term time, the DSL will be available during school hours for staff to discuss any safeguarding concerns. Where a trained DSL (or deputy) is not on site, in addition to the above, a senior leader will assume responsibility for coordinating safeguarding on site.
- 5.3.4 When the DSL is absent, the deputy headteacher/DDSL, **Mr James Barker**, will act as cover.
- 5.3.5 If the DSL and DDSL are not available, **Mrs Hannah Cooke (EYFS Leader)**, **Mrs Katy Haxby (Y3/4 Leader)** or **Mr Ryan Waterfall-Smith (Y5/6 Leader)** will act as cover.
- 5.3.6 The DSL will be given the time, training, resources and support to:
- Provide advice and support to other staff on child welfare and child protection matters.
  - Take part in strategy discussions and inter-agency meetings and/or support other staff to do so.
  - Contribute to the assessment of children by providing as much information as possible as part of the referral process to help social care assessments consider contexts outside the home and enable a contextual approach to harm.
  - Refer suspected cases, as appropriate, to the relevant body (children's social care Duty and Advice team, Channel programme, Disclosure and Barring Service, Teaching Regulation Agency and/or police), and support staff who make such referrals directly. Provide support for staff to comply with their mandatory reporting duties in cases where FGM has been identified.
  - **Jemma Dunne (Headteacher)** will ensure that all staff involved in direct case work of vulnerable children, where there are child protection concerns/issues, have access to regular safeguarding supervision.
  - The DSL will also keep the SLT and governing body informed of any issues and liaise with local authority officers and relevant professionals for child protection concerns as appropriate.

- The DSL is responsible for responding to domestic abuse notifications from the local authority and providing support to children and their families as appropriate.
- The school will ensure representation at appropriate inter-agency meetings such as Initial and Review Child Protection Conferences, and Planning and Core Group meetings, as well as Family Support Meetings.
- Provide reports as required for meetings. Reports will, wherever possible, be shared with parents/carers at least 24 hours prior to the meeting.
- Where a child in school is subject to an inter-agency child protection plan or any multi-agency risk management plan, the DSL will contribute to the preparation, implementation, and review of the plan as appropriate.
- The designated safeguarding lead and any deputies should liaise with the three safeguarding partners and work with other agencies in line with Working Together to Safeguard Children (2018). When to call the police (NPCC 2020) should help designated safeguarding leads understand when they should consider calling the police and what to expect when they do.
- Promote the educational outcomes of children with a social worker and other pupils deemed vulnerable. It is essential therefore that the DSL, who is also the school's designated teacher, works in close collaboration with the SENDCO (**Cathy Utley**) as children who are in need of help and protection must also have their learning needs prioritised in planning to ensure education is a protective factor and not only by way of regular attendance at school.
- Undertake a Prevent Risk Assessment which is shared with all staff.
- Ensure the safeguarding team and all staff have an awareness of online risks and how to tackle arising issues. Be aware of the differences between disinformation (false information *deliberately* made to mislead or manipulate people), misinformation (false or inaccurate information spread without intent to deceive) and conspiracy theories (explanations of events or situations that often involve secret plots by powerful groups without solid evidence) when online, particularly in relation to AI.
- Ensure digital and technology standards are met in relation to filtering and monitoring when children are accessing online sites.
- Where a child is accessing an AP (alternative provision), ensure appropriate safeguarding checks have been carried out on anyone working at the AP.
- Where a child is accessing an AP, ensure regular contact is made to assess any changes that may put the child at risk.

**The full responsibilities of the DSL are set out in Annex C of KCSIE – Role of the designated safeguarding lead. All designated safeguarding leads and deputy safeguarding leads must read and comply with this.**

## **5.4 The governing body**

5.4.1 The governing body will approve this policy at each review and hold the headteacher to account for its implementation and any actions/recommendations made by the Local Authority in respect to strengthening the school's safeguarding arrangements.

5.4.2 Governors are asked to complete the CYC recommended safeguarding training, which is one of the below courses:

- 1) Governors' Responsibilities Around Safeguarding
- OR
- 2) Safeguarding: How to Fulfil the Governance Role
- AND
- Reading KCSIE plus the annual updates.

The governing board will ensure that all policies, procedures and training are effective and comply with the law at all times. The governing body will ensure that all staff undergo safeguarding and child protection training, including online safety training providing an understanding of the expectations and applicable roles and responsibilities in relation to filtering and monitoring.

- 5.4.3 The governing body will appoint a lead governor to monitor the effectiveness of this and other related safeguarding policies (i.e.: online safety, whistleblowing, behaviour etc.) in conjunction with the full governing body. Staff governors cannot be the lead governor with responsibility for safeguarding and child protection. Lead governors should access the LA designated safeguarding governor training every three years including online safety training.
- 5.4.4 In the event that safeguarding concerns, or an allegation of abuse is made against the headteacher, the chair of governors will act as the 'case manager'. Refer also to Section 16.2.
- 5.4.5 The governing body will ensure that the school has robust IT filtering and monitoring systems in place and should be informed in part, by the risk assessment required by the Prevent Duty in order to limit children's exposure to online risks. The governing body should consider the number and age range of children, those who are potentially at greater risk of harm and how often they access the IT system.

The school's current filtering system is managed by City of York Council and their IT contact is Leigh Farrow ([leigh.farrow@york.gov.uk](mailto:leigh.farrow@york.gov.uk)):

*City of York Council schools internet provision currently utilises the Smoothwall filtering solution. This is a comprehensive filtering platform using dynamic and group based filtering including new requirements around child safety/anti-radicalisation. It is designed to protect schools and academies from inappropriate online content, as well as meeting or exceeding the current compliance and recommended safeguarding children legislation. Detailed alerts and reporting are configured to alert the Authority helpdesk of an incident at a school, enabling a fast response to ensure children's safety.*

- 5.4.6 The governing body, along with the school's senior leadership team, are responsible for satisfying themselves and obtaining written assurances from any relevant school lettings and alternative/off site providers and provisions that their safeguarding arrangements are secure, in keeping with the requirements set out in KCSIE. This includes ensuring that the provision has effective safeguarding policy/procedures/training in place for all staff. The provision follows safer recruitment processes and has clear allegation management processes. Pupils who attend alternative provisions can often have complex needs and it is important that these settings are aware of the additional risk of harm that their pupils may be vulnerable to, and appropriate risk assessments/support plans are in place where pupils access provision offsite. St Oswald's CE Primary School use the following alternative or off-site providers and have written evidence of safeguarding arrangements:
- Sewells FM
  - ABM Catering
  - City of York Council Work with School (supply agency)
  - Peri music and sport teachers/instructors, teaching at the school

Where the school places a pupil with an alternative provision provider, the Governing Board retains strategic oversight of safeguarding for that pupil. Governors must be informed by the safeguarding team about the checks in place and assure themselves that the placement is appropriate, safe and meets the pupil's educational, pastoral and safeguarding needs. This includes seeking evidence that the school has carried out the required due-diligence checks, that the provider has appropriate safeguarding procedures in place, and that clear arrangements exist for ongoing communication, attendance monitoring and reporting of any concerns. Governors should challenge leaders where they feel procedures are insufficient.

- 5.4.7 The governing body will supply information as requested by the CYSCP and the Local Authority Education Safeguarding Team.

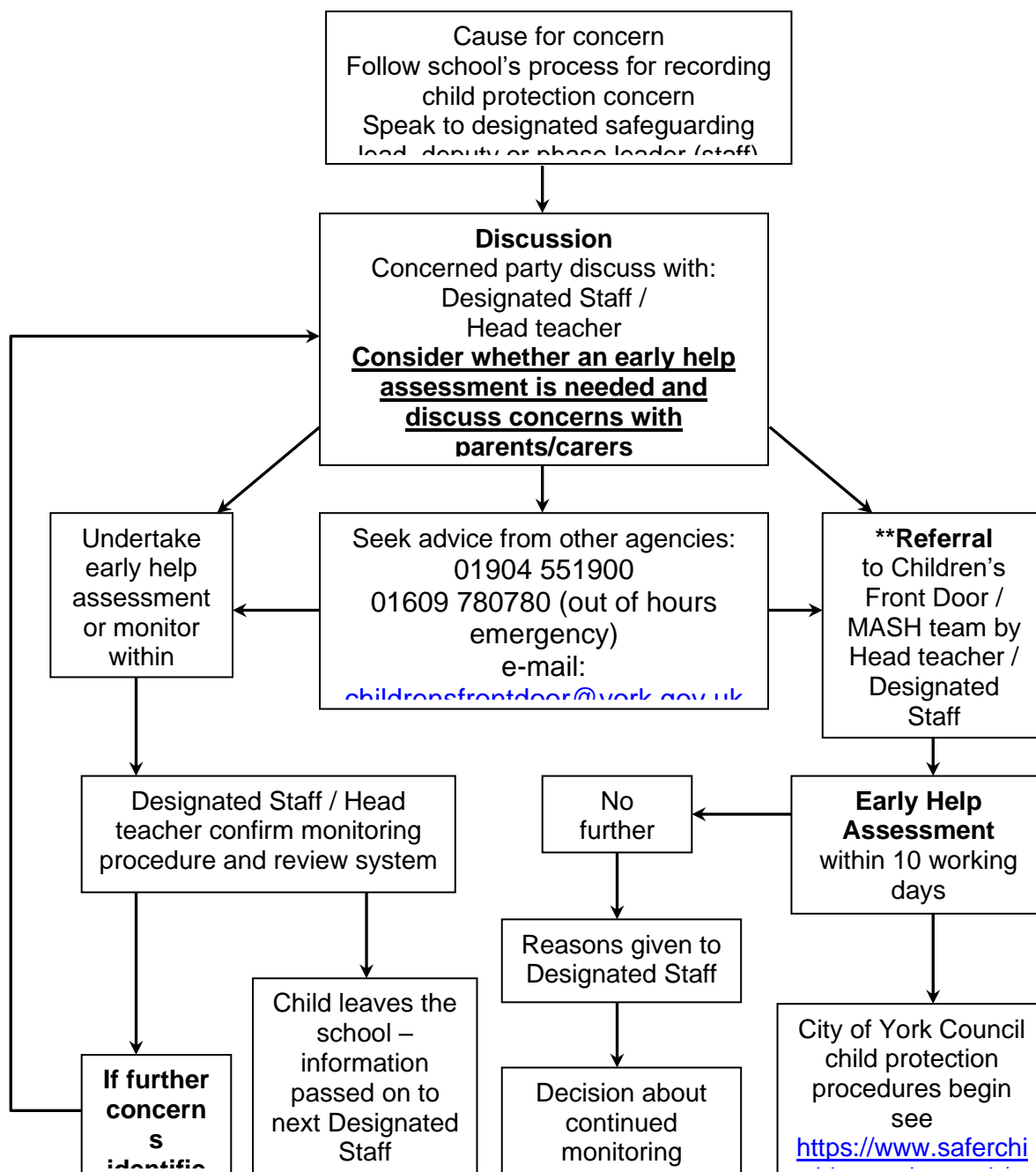
**The full responsibilities of the governing body are set out in Part Two of KCSIE – The management of safeguarding. The governing body will ensure that the school is fully compliant with their statutory safeguarding responsibilities.**

## **5.5 The headteacher/principal**

- 5.5.1 The headteacher is responsible for the implementation of this policy, including:

- Ensuring that staff, (including temporary and supply staff), and volunteers are informed of this policy as part of their induction.
- Communicating this policy to parents when their child joins the school and via the school website.
- Ensuring that the roles and responsibilities of the DSL/DDSL as referenced in Annex C of **KCSiE (2025)**, are reflected in their job description.
- Ensuring that the DSL has appropriate time, training and resources, and that there is always adequate cover if the DSL is absent.
- Ensuring that they complete the one day LA course for headteachers/principals on safeguarding and child protection and that all staff undertake appropriate safeguarding and child protection training and update this every three years.
- Acting as the 'case manager' in the event of an allegation of abuse made against another member of staff (including supply staff) or volunteer, where appropriate.
- Ensuring that all recommendations made by the LA in relation to strengthening the school's safeguarding arrangements are actioned in a timely fashion.

**Fig 1a: Summary of in-school procedures to follow where there are concerns about a child**



**Fig 1b: City of York Council – levels of need**





### Confidentiality and Information Sharing

- 6.1.1 Confidentiality is an issue that needs to be understood by all those working with children, particularly in the context of safeguarding.
- 6.1.2 School recognises that the only purpose of confidentiality in this respect is to benefit the child. Staff/volunteers and visitors to school should never promise a child that they will not tell anyone about an allegation/report of abuse and must pass any cause for concerns immediately to a designated safeguarding lead.
- 6.1.3 Confidentiality is addressed throughout this policy with respect to record-keeping (see section 18), dealing with reports of abuse (see Appendix 2), allegations of abuse against staff (see section 16.2 ), information sharing and working with parents (see section 6.2).
- 6.1.4 Timely information sharing is essential for effective safeguarding. This school/college will share safeguarding information as appropriate in keeping with the principles outlined in the government guidance document, [Information sharing: Advice for practitioners providing safeguarding services to children, young people, parents and carers \(DfE 2024\)](#). This guidance has been produced to support practitioners in the decisions they take to share information, which reduces the risk of harm to children and young people and promotes their wellbeing.
- 6.1.5 Fears about sharing information must not be allowed to stand in the way of the need to promote the welfare, and protect the safety, of children.
- 6.1.6 All staff must have due regard for the relevant data protection principles which allow them to share (in the context of their role) and withhold personal information, as provided for in the Data Protection Act 2018 and GDPR.



- 6.1.7 In order to promote positive educational outcomes for vulnerable children, including children with social workers, information that can help to support positive outcomes being achieved will be shared with colleagues in school that are not DSLs or DDSs as appropriate.
- 6.1.8 If staff are in any doubt about sharing information, they must speak to the designated staff, or the headteacher/principal.

## **6.2 Working with parents and other agencies to protect children**

- 6.2.1 Parents/carers will be made aware of our in-school procedures in respect to taking any reasonable action to safeguard the welfare of its pupils. In cases where the school has reason to be concerned that a child may be suffering significant harm, ill treatment, neglect or other forms of harm, staff will follow the procedures for responding to suspected cases of child abuse or neglect outlined in this policy document and contact CSWS Duty and Advice team to discuss their concerns.
- 6.2.2 In keeping with KCSIE, we will endeavour wherever possible to obtain at least two emergency contacts for every child in the school in case of emergencies, and in case there are welfare concerns at the home.
- 6.2.3 In general, we will discuss concerns with parents/carers before approaching other agencies and will seek to inform parents/carers and receive their consent when making a referral to another agency. Appropriate staff will approach parents/carers after consultation with the DSL. The exception to this rule will be in situations where a member of staff has reasonable cause to believe that informing parents/carers of a referral to another agency may increase the risk of significant harm to the child.
- 6.2.4 Parents/carers are informed about our Safeguarding & Child Protection policy through the school website, newsletters etc. A safeguarding & child protection poster is prominent in the school foyer/reception area.
- 6.2.5 Where a parent/carer has expressed their intention to remove a child from school with a view to educating at home, the school will, working in partnership with the LA and other key professionals invite parents/carers to a meeting where possible. Ideally, this would be before a final decision has been made, to ensure the parents/carers have considered what is in the best interests of the child. This is especially important where a child has SEND, is vulnerable, and/or has a social worker.

## **6.3 Multi-agency work**

- 6.3.1 We will co-operate with City of York Council child protection and early help teams in accordance with the requirements of the Children Act 1989 and allow access to child and child protection records for them to conduct section 17 or section 47 assessments.
- 6.3.2 In the best interests of our pupils, we will work with all relevant professionals and agencies as required to safeguard children and promote their welfare.

## **7. Opportunities to teach safeguarding – Preventative Curriculum**

### **7.1 Our role in the prevention of abuse**

We will identify and provide opportunities for children to develop skills, concepts, attitudes and knowledge to promote their safety and wellbeing.

7.1.1 We will ensure that children are taught about safeguarding, including online safety, and recognise that a one-size-fits-all approach may not be appropriate for all children, and a more personalised or contextualised approach for more vulnerable children, victims of abuse and some SEND children may be needed.

7.1.2 As part of providing a broad and balanced curriculum, relevant issues will be addressed through our school's wider curriculum offer. This includes sensitive issues and concerns, such as anti-bullying, sharing nudes, and online safety. The curriculum will reflect the statutory Relationship Education, Relationship and Sex Education and Health Education (DfE 2020).

## **7.2 Other areas of work**

7.2.1 All our policies that address issues of power and potential harm, e.g., Anti-Bullying, Equalities, Positive Handling, Behaviour, Online Safety and RHE will be linked to ensure a whole school approach.

7.2.2 Our Safeguarding and Child Protection policy cannot be separated from the general ethos of the school which is to ensure that children are treated with respect and dignity, feel safe and are listened to.

7.2.3 The school's online safety policy is reflective of the requirements set out in **KCSiE (2025)** in regard to content, contact, conduct and commerce. The school's online safety policy is aligned to the school behaviour policy and reflects our approach to issues of online safety (including the sharing of nudes and semi-nudes) that empowers us to protect and educate the whole school or college community in their use of technology and establishes mechanisms to identify, intervene in, and escalate any incident where appropriate.

## **8. Our role in supporting children**

**We will offer appropriate support to individual children who have experienced abuse or who have abused others.**

8.1 In cases where children have experienced abuse/abused others, the DSL will ensure that appropriate support is offered. An individual support package will be devised, implemented and reviewed regularly should the pupil or others affected require additional pastoral support/intervention.

8.2 For children who have sexually harmed or may have sexually harmed peers, where appropriate a Risk Assessment Management Plan (RAMP) will be completed that includes safety and support planning.

## **9. Children with special educational needs, disabilities or health issues**

9.1 We recognise that while all children have a right to be safe, some children *may* be more vulnerable to abuse e.g., those with a disability, special educational needs, mental health issues or those living with domestic violence or drug/alcohol abusing parents, parents' mental health issues, learning disabilities, children who are in care or previously looked after, children having adverse childhood experiences etc.

Additional barriers can exist when recognising abuse and neglect in this group, including:

- Assumptions that indicators of possible abuse such as behaviour, mood and injury relate to the child's condition without further exploration
- Pupils being more prone to peer group isolation or bullying (including prejudice-based bullying) than other pupils
- The potential for pupils with SEN, disabilities or certain health conditions being disproportionately impacted by behaviours such as bullying, without outwardly showing any signs
- Communication barriers and difficulties in managing or reporting these challenges

Our school SENDCO, **Mrs Cathy Utley**, has undergone NSPCC safeguarding training in relation to protecting children with SEND.

9.2 When the school is considering excluding, either for a fixed term period or permanently, a vulnerable pupil/a child with additional needs and/or a pupil who has social care involvement is either subject to a S47 Child Protection plan/child in need plan or there are/have previously been child protection concerns, we will undertake an informed (multi-agency where other professionals are involved) risk-assessment prior to making the decision to exclude. Schools would be advised to speak to the named social worker for the child where the exclusion will be to the home to ensure that any risk is assessed and speak to Area Inclusion Partnership for support if required. Schools should note advice in the [Suspension and permanent exclusion guidance September 2023](#) (DfE) Section 3. In situations that a looked after child is at risk of exclusion the school will notify the Virtual School. In the event of a one-off serious incident resulting in an immediate decision to permanently exclude, the risk assessment must be completed prior to convening a meeting of the governing board.

9.3 All staff have a role in preventing impairment of children's mental health/emotional wellbeing, including promoting positive mental health and identifying where students are struggling with their Mental Health. We regularly communicate messages to students regarding wellbeing and the promotion of positive mental health strategies through the curriculum, PSHCE, phase assemblies and Circle Time.

9.4 Concerns regarding a student's mental health/emotional wellbeing should be reported to a member of the school safeguarding team in keeping with the school's safeguarding reporting arrangement so that students can be offered appropriate support, this may include local or national online services where appropriate. In addition, the school is able to make referrals to a wide range of external services to secure additional appropriate support for students.

9.5 Our school ELSAs (Emotional Literacy Support Assistants) is **Miss Suzanne Benjamin**. She is led by the SENDCO who coordinates any SEMH support required for individual pupils. **Alongside CPD and emerging needs within school, teaching assistants may also deliver interventions linked to the emotional support and nurture support of individuals they work with.**

## 10. Children at risk of specific forms of abuse

10.1 Our school follows the City of York safeguarding children partnership (<https://www.saferchildrenyork.org.uk/>) locally agreed multi-agency procedures in circumstances where children are at risk of or specific forms of abuse as outlined in Part 1 and Annex of B KCSIE.

## 10.2 Pupils who are LGBTQ+ or gender questioning

We recognise that pupils who are (or who are perceived to be) lesbian, gay, bisexual, transgender or gender questioning (LGBTQ+) can be targeted by other children. We also recognise that LGBTQ+ children are more likely to experience poor mental health. Any concerns should be reported to the DSL.

When families/carers are making decisions about support for gender questioning pupils, they should be encouraged to seek clinical help and advice. This should be done as early as possible when supporting pre-pubertal children.

When supporting a gender questioning pupil, we will take a cautious approach as there are still unknowns around the impact of social transition, and a pupil may have wider vulnerability, such as complex mental health and psychosocial needs, and in some cases, autism and/or attention deficit hyperactivity disorder (ADHD).

We will also consider the broad range of their individual needs, in partnership with their parents/carers (other than in rare circumstances where involving parents/carers would constitute a significant risk of harm to the pupil). We will also include any clinical advice that is available and consider how to address wider vulnerabilities such as the risk of bullying.

Risks can be compounded where children lack trusted adults with whom they can be open. We therefore aim to reduce the additional barriers faced and create a culture where pupils can speak out or share their concerns with members of staff.

Further information and advice regarding children who are LGBTQ+ or gender questioning is outlined within our [antibullying policy](#).

## 11 Remote Learning and Remote Welfare

11.1 If children are being asked to learn online at home, for example because of the coronavirus pandemic, schools and colleges should follow advice from the DfE on [safeguarding and remote education \(DfE, 2021b\)](#). In addition to following the Guidance for Safer Working Practice (Safer Recruitment Consortium, 2022)

11.2 Where children are remote learning and the DSL has identified a child to be vulnerable, on the edge of social care support, or who would normally receive pastoral-type support in school, they should ensure that a robust communication plan is in place for that child or young person. The communication plans can include remote contact, phone contact, door-step visits. Other individualised contact methods should be considered and recorded. Details of this plan must be recorded, as should a record of contact made.

11.3 We recognise that school is a protective factor for children and situations such as periods of national lockdown can affect the mental health of pupils and their parents/carers. Staff will be aware of these issues and have due regard for them in setting expectations of pupils' work where they are at home.

## 12 Female Genital Mutilation: The Mandatory Reporting Duty

12.1 The Department for Education's Keeping Children Safe in Education explains that FGM comprises "all procedures involving partial or total removal of the external female genitalia, or other injury to the female genital organs".

12.2 FGM is illegal in the UK and a form of child abuse with long-lasting, harmful consequences. It is also known as 'female genital cutting', 'circumcision' or 'initiation'.

- 12.3 **Any teacher** who discovers that an act of FGM appears to have been carried out on a **pupil under 18** must immediately (in consultation with the DSL) report this to the police, personally. This is a statutory duty, and teachers will face disciplinary sanctions for failing to meet it.
- 12.4 The duty above does not apply in cases where a pupil is *at risk* of FGM or FGM is suspected but is not known to have been carried out. Staff must not examine pupils.
- 12.5 **Any other member of staff** who discovers that an act of FGM appears to have been carried out on a **pupil under 18** must speak to the DSL and follow our local safeguarding procedures.
- 12.6 **Any member of staff** who suspects a pupil is *at risk* of FGM, must speak to the DSL and follow our [local safeguarding children's partnership procedures](#).

### 13 Radicalisation and Terrorism

- 13.1 Radicalisation is the process of a person legitimising support for, or use of, terrorist violence. Terrorism is an action that endangers or causes serious violence to a person/people; causes serious damage to property; or seriously interferes or disrupts an electronic system. The use or threat must be designed to influence the government or to intimidate the public and is made for the purpose of advancing a political, religious, or ideological cause.
- 13.2 If staff are concerned about a change in the behaviour of an individual or see something that concerns them (this could be a colleague too) contact the DSL. If you require further support or information, contact the LA safeguarding adviser.
- 13.3 Schools and colleges are expected to assess the risk of children being drawn into terrorism, including support for extremist ideas that are part of terrorist ideology. This means being able to demonstrate both a general understanding of the risks affecting children and young people in the area and a specific understanding of how to identify individual children who may be at risk of radicalisation and what to do to support them. For further guidance please see [Managing risk of radicalisation in your education setting - GOV.UK \(www.gov.uk\)](#)
- 13.4 Effective early help relies on all staff to be vigilant and aware of the nature of the risk for children and young people, and what support may be available. Our school will ensure that as far as possible all front-line staff will undertake Prevent awareness training. DSLs and those with a responsibility for Prevent will ensure they attend Prevent training every two years, in particular focussing on local threat and risk and ideology training as outlined in the [Prevent Duty Guidance](#). Safeguarding governors and the Chair of Governors also undertake Prevent awareness training. Radicalisation refers to the process by which a person comes to support terrorism and forms of extremism leading to terrorism. Terrorism is an action that endangers or causes serious violence to a person/people; causes serious damage to property; or seriously interferes or disrupts an electronic system. The use or threat must be designed to influence the government or to intimidate the public and is made for the purpose of advancing a political, religious or ideological cause.

### 14 Channel

- 14.1 Channel is a voluntary, confidential support programme which focuses on providing support at an early stage to people who are identified as being vulnerable to being drawn into terrorism. Prevent referrals may be passed to a multi-agency Channel panel, which will discuss the individual referred to determine whether they are vulnerable to being drawn into terrorism and consider the appropriate support required. A representative from the school or college may be asked to attend the Channel panel to help with this assessment. An individual's engagement with the programme is entirely voluntary at all stages.

## **15 Child on child abuse**

- 15.1 We recognise that children are capable of abusing their peers and that child on child abuse can manifest in many different ways, including bullying, cyber bullying, criminal and sexual exploitation, sexual harassment and violence, initiation/hazing, sharing of nudes and semi-nudes, up skirting (taking a picture under a person's clothing without them knowing, with the intention of viewing their genitals or buttocks to obtain sexual gratification, or cause the victim humiliation, distress or alarm) and abuse within intimate partner relationships. It is very clear that this type of abuse should always be treated seriously, and never just as banter, part of growing up or boys being boys. Our school has a zero tolerance approach to such attitudes and behaviours.

We will take steps to minimise the risk of child-on-child abuse by ensuring students recognise behaviour that is not appropriate and understand how to stay safe and challenge and report unwanted behaviours. We will also regularly review the school site and school activities to further minimise the risk of child-on-child abuse occurring.

We recognise that abuse can often go unreported or be reported latterly. We will encourage and support students to report child-on -child abuse to trusted adults in school or the NSPCC helpline.

Most cases of pupils hurting other pupils will be dealt with under our school's behaviour policy, but this child protection and safeguarding policy will apply to any allegations that raise safeguarding concerns.

All concerns around child-on-child abuse will be taken seriously, reported, investigated, recorded and managed in line with the child protection procedures outlined in this policy. The DSL is responsible for overseeing support to all children involved in incidents of child-on-child abuse. Where incidents of child-on-child abuse involve children attending another school setting we will liaise with the relevant DSL/DO at the setting to ensure appropriate information is shared.

- 15.2 We recognise that sexual violence and/or sexual harassment can happen anywhere including educational settings. Where concerns of sexual violence or sexual harassment are witnessed, disclosed or reported to the school (including those that have happened outside of school or online) the concern will be taken seriously. We recognise that sexual violence and harassment exist on a continuum and may overlap; they can occur online and face to face (both physical and verbal) and are never acceptable. In responding to such concerns DSL must (where appropriate) always complete an AIM (Assessment, Intervention, Moving On) checklist and contact the Duty and Advice team if appropriate and follow the principles set out in Part 5 of KCSiE
- 15.3 Children who may have/have sexually harmed others will be considered separately from the needs of those who have/may have been subject to sexual harm. Children who have/may have sexually harmed others will be responded to in a way that meets their needs as well as protecting others within the school

community through a multi-agency risk assessment management plan (RAMP). Where appropriate there must be a coordinated multi-agency approach to risk assessment which will include involvement of parent/carers, social care, health, police and youth justice (where appropriate). Further support and advice can be sought from CYC MASH team.

- 15.4 We will ensure that all children who may have/has been sexually harmed will be taken seriously and that they will be supported and kept safe. Where appropriate support plans will be put in place for children subjected to sexual harm.
- 15.5 In cases where allegations of sexual violence and/or harassment are found to be unsubstantiated, unfounded, false or malicious, the DSL will consider whether the child or person who has made the allegation is in need of support or may have been abused by someone else. In cases where the report is found to be deliberately invented or malicious the school will consider whether it is appropriate to take any disciplinary action in keeping with the school's behaviour management policy.
- 15.6 Where child exploitation (ie; criminal, sexual, trafficking, modern day slavery etc.), or the risk of it, is suspected, frontline practitioners must notify the designated member of staff for child protection, in line with the child protection policy reporting systems.
- 15.7 If the child /young person already has an allocated social worker, the DSL must contact them (or their team manager) to discuss any concerns about child exploitation. Where children may currently be looked after or previously looked after the DSL should also notify the Designated Teacher for children looked after.
- 15.8 We will ensure the school works in partnership with parents / carers and other agencies as appropriate. This includes facilitating return to home interviews as requested.
- 15.9 We will ensure the school works in partnership with parents / carers and other agencies as appropriate. This includes facilitating return to home interviews as requested.

## 16 Sharing Nudes and Semi Nudes

### Staff responsibilities when responding to an incident

- 16.1 If any adult in school is made aware of an incident involving the consensual or non-consensual sharing of nude or semi-nude images/videos (also known as 'sexting' or 'youth produced sexual imagery'), they must report it to the DSL immediately. The DSL will refer to DfE guidance: [Sharing nudes and semi-nudes: how to respond to an incident \(overview\) \(updated March 2024\) - GOV.UK \(www.gov.uk\)](https://www.gov.uk/government/guidance/sharing-nudes-and-semi-nudes-how-to-respond-to-an-incident-overview)

They must **not**:

- View, copy, print, share, store or save the imagery yourself, or ask a pupil to share or download it (if you have already viewed the imagery by accident, you must report this to the DSL)
- Delete the imagery or ask the pupil to delete it



- Ask the pupil(s) who are involved in the incident to disclose information regarding the imagery (this is the DSL's responsibility)
- Share information about the incident with other members of staff, the pupil(s) it involves or their, or other, parents and/or carers
- Say or do anything to blame or shame any young people involved

## **DSL Responsibilities**

16.2 Following a report of an incident, the DSL will hold an initial review meeting with appropriate school staff – this may include the staff member who reported the incident and the safeguarding or leadership team that deals with safeguarding concerns. This meeting will consider the initial evidence and aim to determine:

- Whether there is an immediate risk to pupil(s)
- If a referral needs to be made to the police and/or children's social care
- If it is necessary to view the image(s) in order to safeguard the young person (in most cases, images or videos should not be viewed)
- What further information is required to decide on the best response
- Whether the image(s) has been shared widely and via what services and/or platforms, (this may be unknown)
- Whether immediate action should be taken to delete or remove images, or videos, from devices or online services
- Any relevant facts about the pupils involved which would influence risk assessment
- If there is a need to contact another school, college, setting or individual
- Whether to contact parents or carers of the pupils involved (in most cases parents/carers should be involved)

The DSL will make an immediate referral to police and/or children's social care if:

- The incident involves an adult
- There is reason to believe that a young person has been coerced, blackmailed, or groomed, or if there are concerns about their capacity to consent (for example, owing to special educational needs)
- What the DSL knows about the images or videos suggests the content depicts sexual acts which are unusual for the young person's developmental stage, or are violent
- The imagery involves sexual acts and any pupil in the images or videos is under 13
- The DSL has reason to believe a pupil is at immediate risk of harm owing to the sharing of nudes and semi-nudes (for example, the young person is presenting as suicidal or self-harming)

16.3 If none of the above apply then the DSL, in consultation with the headteacher and other members of staff as appropriate, may decide to respond to the incident without involving the police or children's social care. The decision will be made and recorded in line with the procedures set out in this policy.

## **17 Children who are absent from education**

17.1 A child who is absent as well as missing from education is a potential indicator of abuse or neglect. Where a child is reported to be missing education we will comply with our statutory duty to inform the local authority of any pupil who falls

within the reporting notification requirements outlined in Children Missing Education – Statutory guidance for local authorities (DfE September 2016) and follow the York Children's Services LA procedure and contact Mark Smith 01904 555187

17.2 Children who are absent, abscond or go missing during the school day are vulnerable and at potential risk of abuse, neglect, CSE or CCE including involvement in county lines. School and college staff members must follow the school's or college's procedures for dealing with children who are absent/ go missing, particularly on repeat occasions, to help identify the risk of abuse and neglect including sexual abuse or exploitation and to help prevent the risks of their going missing in future (see Appendix 10).

17.3 Admin colleagues within school will liaise regularly with Mark Smith at City of York Council regarding children who move to different schools or move internationally. All cases will be monitored in line with CYC policy and guidance. A 'Missing Children in Education' register is kept by the admin team.

## **18 A Safer School Culture**

**The governing board will ensure that the following appropriate policies, and procedures are in place and shared with staff at the point of induction, in order for appropriate action to be taken in a timely manner to safeguard and promote children's welfare:**

- Whistle Blowing/Confidential reporting policies (guidance to staff and volunteers on how they can raise concerns and receive appropriate feedback on action taken when staff have concerns about any adult's behaviour)
- School's procedures for managing children who are missing from education
- Guidance on Safer Working Practices
- Safeguarding and Child Protection policy (including online safety).
- School behaviour policy
- The names, roles and responsibilities of the designated safeguarding lead and any deputies.

## **19 Online safety and the use of mobile technology**

We recognise the importance of safeguarding children from potentially harmful and inappropriate online material, and we understand that technology is a significant component in many safeguarding and wellbeing issues.

To address this, our school aims to:

- Have robust processes (including filtering and monitoring systems) in place to ensure the online safety of pupils, staff, volunteers and governors
- Protect and educate the whole school community in its safe and responsible use of technology, including mobile and smart technology (which we refer to as 'mobile phones')
- Establish a 'smart phone free' community where smart phones are discouraged for children and, where necessary, have clear guidelines for the use of mobile phones for the whole school community
- Establish clear mechanisms to identify, intervene in and escalate any incidents or concerns, where appropriate

Further information regarding the safe use of online systems can be found within our 'Online Safety' policy.

### **To meet our aims and address online risks, we will:**

- Educate pupils about online safety as part of our curriculum. For example:
  - The safe use of social media, the internet and technology
  - Keeping personal information private
  - How to recognise unacceptable behaviour online
  - How to report any incidents of cyber-bullying, ensuring pupils are encouraged to do so, including where they're a witness rather than a victim
- Train staff, as part of their induction, on safe internet use and online safeguarding issues including cyber-bullying, the risks of online radicalisation, and the expectations, roles and responsibilities around filtering and monitoring. All staff members will receive refresher training as required and at least once each academic year
- Educate parents/carers about online safety via our website, communications sent directly to them and during parents' evenings. We will also share clear procedures with them so they know how to raise concerns about online safety.
- Establish a 'smart phone free zone' for our pupils and make sure staff are aware of any restrictions placed on them with regards to the use of their mobile phone and cameras.
- Explain the sanctions we will use if a pupil is in breach of our policies on the acceptable use of the internet and mobile phones
- Make sure all staff, pupils and parents/carers are aware that staff have the power to search pupils' phones, as set out in the [DfE's guidance on searching, screening and confiscation](#)
- Put in place robust filtering and monitoring systems to limit children's exposure to the 4 key categories of risk (described above) from the school's IT systems.
- Carry out an annual review of our approach to online safety, supported by an annual risk assessment that considers and reflects the risks faced by our school community
- Provide regular safeguarding and children protection updates including online safety to all staff, at least annually, in order to continue to provide them with the relevant skills and knowledge to safeguard effectively
- Review the child protection and safeguarding policy, including online safety, annually and ensure the procedures and implementation are updated and reviewed regularly
- Ensure the safeguarding team and all staff have an awareness of online risks and how to tackle arising issues. Be aware of the differences between disinformation, misinformation and conspiracy theories when online, particularly in relation to AI.

### **Artificial intelligence (AI)**

Generative artificial intelligence (AI) tools are now widespread and easy to access. Staff, pupils and parents/carers may be familiar with generative chatbots such as ChatGPT and Google Gemini.

We recognise that AI has many uses, including enhancing teaching and learning. However, AI may also have the potential to facilitate abuse (e.g. bullying and grooming) and/or expose pupils to harmful content. For example, in the form of 'deepfakes', where AI is used to create images, audio or video hoaxes that look real.

We will treat any use of AI to access harmful content or bully pupils in line with [this policy and our anti-bullying policy](#).

Staff should be aware of the risks of using AI tools while they are still being developed and should carry out risk assessments for any new AI tool being used by the school. Our school's requirements for filtering and monitoring also apply to the use of AI, in line with Keeping Children Safe in Education.

## **20 Safer Recruitment, selection and pre-employment vetting**

- 19.1 The school pays full regard and commitment to following the safer recruitment, selection and pre-employment vetting procedures as outlined in part three of KCSiE
- 19.2 The school will maintain a single central record which demonstrates the relevant vetting checks required including: a barred list check, DBS check at the correct level, identity, qualifications, prohibition order and right to work in the UK. (see Part 3 of KCSiE).
- 19.3 All recruitment materials will include reference to the school's commitment to safeguarding and promoting the wellbeing of pupils. (see [Appendix 6](#))
- 19.4 The school will ensure that all recruitment panels include at least one person that has undertaken the safer recruitment consortium, safer recruitment training as recommended by the Local Authority/CYSCP.
- 19.5 For individuals who have lived or worked outside the UK, in addition to the same checks as all other staff, the school will complete any additional checks required to satisfy themselves that the individual is suitable to work with children. This may include obtaining a letter from the professional regulatory authority in the country (countries) in which the candidate has worked confirming that they have not imposed any sanctions or restrictions, and /or that they are aware of any reason why they are unsuitable to teach where possible.
- 19.6 The school/ will ensure that written risk assessments are undertaken in situations where information provided on DBS certificates necessitates so. Written risk assessments must be undertaken for all volunteers **not** engaging in regulated activity. Advice and support for carrying out risk assessments can be accessed through the school's HR Advisor/Provider/Contact or the Education Safeguarding Team.
- 19.7 The school will inform shortlisted candidates that online searches may be done as part of due diligence checks.
- 19.8 Copies of documents used to verify the successful candidate's identity, right to work and required qualifications should be kept in their personnel file.

## **21 Managing allegations or safeguarding concerns against a member of staff or person in school procedures.**

- 20.1 These procedures must be followed in any case in which it is alleged that a member of staff (including supply staff), governor, visiting professional or volunteer has met the harm test, this includes where an adult has:

- a) behaved in a way that has harmed a child or may have harmed a child
- b) possibly committed a criminal offence against or related to a child
- c) behaved towards a child or children in a way that indicates s/he may pose a risk of harm to children
- d) behaved or may have behaved in a way that indicates they may not be suitable to work with children. *(This includes any behaviour that may have happened outside of school that might make the individual unsuitable to work with children. This is known as transferable risk.)*

20.2 All adults working in school have a duty to disclose to the headteacher/principal (or chair of governors where appropriate) where their relationships and associations both within and outside of the workplace (including online) may have implications for safeguarding children in school.

20.3 Examples of behaviours that would warrant an allegation or safeguarding concern by a member of staff could include:

- Physical, for example intentional use of force as a punishment, slapping, use of objects to hit with, throwing objects or rough physical handling.
- Emotional, for example intimidation, belittling, scapegoating, sarcasm, lack of respect for children's rights, and attitudes which discriminate on the grounds of race, gender, sex, disability or sexuality.
- Sexual, for example sexualised behaviour towards pupils, grooming, sexual harassment, sexual assault and rape, sending inappropriate messages through social media and other technologies.
- Neglect which may include failing to act to protect a child or children, failing to seek medical attention or failure to carry out appropriate/proper risk assessment etc.

20.4 A safeguarding complaint that meets the above criteria must be reported to the Headteacher ("case manager") immediately. If the complaint involves the headteacher then the next most senior member of staff must be informed and the chair of governors in our school will be the named case manager (Claire Sinclair, Chair of Governors). They will follow the processes outlined in this section.

20.4.1 Where a Headteacher determines that a safeguarding allegation does not meet the harm threshold in line with the criteria above they will refer the matter to be managed in line with paragraphs 20.8-20.9 (inc.) by a designated manager with appropriate safeguarding training. It is important for Headteachers to carefully consider who in school is best placed to manage concerns that do not meet the harm threshold and ensure appropriate action is taken given the sensitive and confidential nature of the information relating to staff over time. In many cases Headteachers may decide to retain this role in the event that they have appropriate safeguarding training.

20.5 All staff must fully understand that any adult behaviours that deviate from the Guidance for Safer Working Practice, including inappropriate conduct outside of work are a concern, even if they are low-level. Low-level concerns are concerns that do not meet the harm test/allegations threshold. Examples of such behaviour include:

- *Being over familiar with children*
- *Having favourites*

- *Taking photographs of children on their mobile phone*
- *Engaging with a child on a one-to-one basis in a secluded area or behind a closed door; or*
- *Humiliating pupils*

Schools may receive an allegation relating to an incident that happened when an individual or organisation was using their school premises for the purposes of running activities for children (*e.g., Community groups, sports associations or service providers that run extra-curricular activities*). As with any safeguarding allegation, schools should follow their safeguarding policies and procedures, including informing the LADO.

20.6 The case manager should ensure that the child is not at risk and where appropriate ensure that the child is referred to the local authority Duty and Advice team as referenced in Part 1 of KCSIE.

20.7 The case manager should gather as much information about the alleged incident as necessary in order to establish whether there is substance to the allegation. In situations where the case manager determines that the harm test has not been met the case manager must ensure that there is a clear record of the incident, including any actions (including whether any HR advice had been sought and actioned) taken to address the concern raised. This record must be kept confidential, stored securely and comply with the Data Protection Act 2018 and the UK GDPR (2018). Records of low level concerns will be reviewed so that any patterns of recurring low level concerns can be identified and responded to appropriately, this may include a referral to the LADO where repeated behaviours indicate an individual may not be suitable to work with children.

20.8 Low level concerns will be stored in secure HR folders within the Headteacher's office. All low level concern records will be kept until the individual leaves their employment.

20.9 In situations where the case manager has sufficient information to suggest that the harm test/allegations threshold has been met, the case manager must use the local authority designated officer (LADO) notification form in order to assess the level of concern, **prior to contacting the LADO**. As part of this initial consideration, the case manager should consult with their school's HR Advisor/provider/contact or in the case of a supply member of staff the supply agency safeguarding lead/senior manager. The completed LADO notification form must be sent to [lado@york.gcsx.gov.uk](mailto:lado@york.gcsx.gov.uk) **within one working day of the allegation being made**. This will assist the case manager and HR/supply agency senior manager in consultation with the LADO to decide on the most appropriate course of action. This includes when to inform the member of staff of the concerns raised. Parents or carers of the child or children involved should be told about the allegation as soon as possible if they do not already know of it.

20.10 The case manager **must** not carry out an investigation or **directly interview** any child/ witness/ or the individual whom the concern relates to, until the above process has been duly completed and relevant partners have been consulted. However, statements of any alleged incidents of harm should be obtained as appropriate at the earliest opportunity in order to establish facts from relevant individuals.

20.11 A multi-agency allegations management meeting may be arranged to look at the complaint in its widest context. The case manager must attend this meeting, which will be arranged by the LADO. All issues must be recorded, and the outcome reached must be noted to ensure closure.

- 20.12 In many cases it may be appropriate to provide further training and support to staff/volunteers and ensure that they are clear about the expectations for their conduct.
- 20.13 In more serious cases, allegations may be investigated under the formal disciplinary procedures and, where allegations are upheld, formal warnings issued as well as specific training and support. In cases where children/young people may be at further risk and/or evidence/witnesses may be compromised and/or the allegations are so serious that they may, if upheld, constitute gross misconduct, suspension of the member of staff/volunteer may be appropriate and should be considered in line with the school's Disciplinary Policy.
- 20.14 Any staff/volunteers who are dismissed by the school for gross misconduct or cumulative misconduct relating to safeguarding of children/young people will be referred to the DBS for consideration of barring. Similarly, where the school has a reasonable belief that the member of staff/volunteer would have been dismissed by the school had they been employed at the time of the conclusion of investigations, they will be referred to the DBS. The school will keep written records of all of the above.

Local Authority Designated Officer (LADO)	Debra Lane	01904 551783 e-mail: <a href="mailto:lado@york.gov.uk">lado@york.gov.uk</a> <b>NB only email using a secure 'york.gov' email account</b>
---	------------	--

Advice can also be sought from Caroline Wood (Schools' Safeguarding Adviser)  
Telephone: 01904 555694  
e-mail: [caroline.wood@york.gov.uk](mailto:caroline.wood@york.gov.uk)

- 20.15 Where a staff member feels unable to raise an issue with their employer or feels that their genuine concerns are not being addressed, staff can contact any of the professionals named in the above paragraph, in addition to other whistleblowing channels which may be open to them

- 20.16 The City of York Council whistleblowing policy states that concerns can be raised by the following methods:

You can contact either the director of Customer and Business Support Services or the Monitoring Officer. In addition, there is a confidential telephone number (01904 552935) operated by Veritau. It is answered during office hours by one of their fraud investigators and messages can be left at all other times.

Audit Commission for England and Wales Tel 020 7828 1212  
[www.audit.commission.gov.uk](http://www.audit.commission.gov.uk)

Public interest disclosure line 0303 444 8346

Care Quality Commission whistleblowing helpline 03000 616161

Health and Safety Executive Tel 0300 0031647 [www.hse.gov.uk](http://www.hse.gov.uk)

Public Concern at Work Tel 020 7404 6609 [www.pcaw.co.uk](http://www.pcaw.co.uk)

Ofsted Tel: 0300 123 3155 E-mail: [mailto:whistleblowing@ofsted.gov.uk](mailto:mailto:whistleblowing@ofsted.gov.uk)  
[www.ofsted.gov.uk](http://www.ofsted.gov.uk)



## 21 Training and Support

All staff members will be made aware of systems within our school that support safeguarding and these will be explained to them as part of our staff induction. This includes: the school's safeguarding/child protection policy; the school's safer working practice document and the school's whistleblowing procedures, as well as their responsibilities to read and understand KCSiE Part 1 and Annexe B, this must be done as part of their induction and reviewed annually.

- 21.1 We recognise the stressful and traumatic nature of child protection work. Support is available for any member of staff from Jemma Dunne and James Barker. Access to regular and timely supervision is an essential form of support for all designated safeguarding staff. The City of York Council MASH team is also available to support.
- 21.2 Designated Safeguarding staff must have attended a Level 3 safeguarding qualification. They will attend refresher training at least every two years. The DSL will undertake Prevent Awareness Training (e.g. Workshop to Raise Awareness of Prevent [WRAP]) every two years to enable them to provide advice and support to other members of staff on protecting children from the risk of radicalisation. Additional training may also be undertaken (such as AIM training, NSPCC online safety training, FGM awareness training).
- 21.3 The school will ensure all staff including temporary and volunteers receive induction and updated INSET appropriate to their roles and responsibilities, especially staff new to the school. All staff will access basic child protection training including online safety as part of the school's induction arrangements and refresher training at least every three years. The INSET training day in September always gives all staff refresher training. All staff should have regular safeguarding, child protection training and online safety updates (for example, via email and staff meetings), as required, but at least annually, to provide them with relevant skills and knowledge to safeguard children effectively. All staff should access PREVENT training every three years. Training will include briefings on how to manage a report of child-on-child sexual violence or harassment and on the government's anti-radicalisation strategy, PREVENT, to enable staff to identify children at risk of being drawn into terrorism and to challenge extremist ideas. Our September 2023 whole staff INSET training covered all areas of safeguarding awareness but gave particular attention to filtering and monitoring, domestic violence and county lines.
- 21.4 The Headteacher will attend appropriate 1 day safeguarding training at least every three years.
- 21.5 Governors, including the nominated governor will attend specific training for their role, updated at least every three years. This is currently the CYC safeguarding training for school governors as detailed above.
- 21.6 Any training accessed through third party/independent providers must reflect the CYSCP protocols and the CYSCP minimum standards checklist. This training will be recorded by the school on a separate database.
- 21.7 The Headteacher, School Business Manager and at least one member of the governing body that is not a staff governor must complete the National Safer Recruitment Training and refresh this training every three years.

## 22 Child Protection Records

**22.1 The responsibility to maintain, process, share, transfer and store child protection and safeguarding records in accordance with the Data Protection Act 2018 and the GDPR principles is the responsibility of the DSL and any safeguarding deputies. Child protection information will be held securely, with access being restricted to the DSL and their deputies, headteacher and in cases of Early Help, the nominated lead professional, if this is not a designated safeguarding lead/officer. The following information must be kept securely with restricted access, whether paper or electronic:**

- Chronology (summary of significant events and the actions and involvement of the school/college)
- A clear and comprehensive summary of the concern
- Details of how the concern was followed up and resolved
- A note of any action taken, decisions reached and the outcome.
- All completed child protection cause for concern records
- Any child protection information received from the child's previous educational establishment
- Records of discussions, telephone calls and meetings with colleagues and other agencies or services
- Professional consultations
- Letters and emails sent and received relating to child protection matters
- Referral forms sent to MASH team/Front Door, other external agencies or education-based services
- Record of instances where referrals were or were not made to another agency such as Prevent
- Minutes or notes of meetings, e.g. child protection conferences, core group meetings, etc., copied to the file of each child in the family, as appropriate
- Formal plans for, or linked to, the child e.g. child protection plans, Early Help (previously known as CAF's), risk assessments etc
- A copy of any support plan for the pupil concerned

**At St Oswald's CE Primary School, we use CPOMS (Child Protection Online Monitoring System) to record safeguarding logs and paperwork.**

**22.2** Where a pupil leaves their existing provision, we will ensure that the child protection file is transferred securely and separately from the main pupil file to the receiving school/educational establishment (where this is known) as soon as possible and within 5 school days. This is a legal requirement set out under regulation 9 (3) of 'The Education (Pupil Information – England) Regulations 2005. A copy of the chronology must be retained for audit purposes.

**22.3** Where there is an existing risk management plan/assessment in place for behaviours that are deemed potentially harmful to the pupil or others (i.e self-harming or harmful sexualised behaviour), this information must be shared with the destination provision prior to the pupil starting so that appropriate care and control measures can be put in place to mitigate the potential of any risk of further harm occurring. The DSL will also consider if it would be appropriate to share any information with the new school or college in advance of a child leaving, for example prior to a transfer programme.

**22.4** Where a child leaves a school before statutory school leaving age, the child protection file must be transferred to the new school or college. There is no need to keep written or electronic copies of the child protection records, therefore these

will be deleted from electronic systems once the successful transfer has been confirmed. The exception to this rule will be in any of the following instances:

- Where a vulnerable young person is moving to a Further Education establishment, consideration will be given to the pupil's wishes and feelings about their child protection information being passed on, in order that the FE establishment can provide appropriate support. In cases where it is deemed appropriate, relevant child protection information must be shared via the FE Safeguarding Information Sharing Form only. The original records will be retained and archived by the school/college. Due consideration must be given to the sharing of any additional information requested by the receiving establishment.
- Where the destination school is not known (*the original records will be retained by the school/college*)
- Where the child has not attended the nominated school (*the original records will be retained by the school/college*)
- There is any on-going legal action (*the original file will be retained by the school and a copy sent*)
- Where a child moves to a different school outside of the City of York council authority a copy of the child protection record will be retained for reference.

22.5 Pupil records will be transferred in a secure manner, for example, through secure electronic file transfer or by hand. When hand-delivering pupil records, a list of the names of those pupils whose records are being transferred and the name of the school/college they are being transferred to must be made and a signature obtained from the receiving school/college as proof of receipt. When sending records through secure electronic file transfer, a delivery and read receipt of the must be retained for audit purposes.

22.6 If a pupil moves from our school, child protection records will be forwarded onto the named DSL at the new school, with due regard to their confidential nature. Good practice suggests that this will always be done with a face to face handover between designated staff or a verbal conversation is had over the telephone if a face to face handover is not possible. A signed receipt of file transfer or electronic delivery and read receipt must be obtained for audit purposes by the delivering school.

22.7 If sending by post, children's records will be sent "Special Delivery". A note of the special delivery number will also be made to enable the records to be tracked and traced via Royal Mail.

22.8 For audit purposes a note of all pupil records transferred or received will be kept in either paper or electronic format. This will include the child's name, date of birth, where and to whom the records have been sent, and the date sent and/or received. A copy of the child protection chronology will also be retained for audit purposes and kept securely.

22.9 If a pupil is permanently excluded and moves to an alternative or specialist provision, child protection records will be forwarded onto the relevant organisation in accordance with the 'The Education (Pupil Information – England) Regulations 2005, following the above procedure for delivery of the records.

22.10 If a parent chooses to electively home educate (EHE) their child, a notification will be made to CYC. A form is available and should be used.

22.11 When a DSL member of staff resigns their post or no longer has child protection responsibility, there will be a full face to face handover/exchange of information with the new post holder.

- 22.12 In exceptional circumstances when a face to face handover is unfeasible, it is the responsibility of the headteacher to ensure that the new post holder is fully conversant with all procedures and case files.
- 22.13 All DSLs receiving current (live) files or closed files must keep all contents enclosed and not remove any material.
- 22.14 All receipts confirming file transfer must be kept in accordance with the recommended retention periods. For further information refer to the archiving section.
- 22.15 All new children joining the school will require a form completed by their current school to establish whether there are any safeguarding concerns or records which we should be aware of.

## **23 Children's and parents' access to child protection files**

- 23.1 Under Data Protection legislation (General Data Protection Regulation & Data Protection Act 2018) a pupil or their nominated representative have a number of legal right in respect of information relating to them. These rights include the right to access and the right to rectification of inaccurate data. Therefore all information will be accurately recorded, objective in nature and expressed in a professional manner.
- 23.2 Any child who has a child protection file has a right to request access to it. However, neither the child nor the parent has an automatic right to see all the information held in child protection records. Information can be withheld if disclosure:
- could cause serious harm or is likely to cause serious harm to the physical or mental health or condition of the child or another person; or
  - could reveal that the child or another person has been a subject of or may be at risk of child abuse, and the disclosure is not in the best interests of the child; or
  - is likely to prejudice an on-going criminal investigation; or
  - information about the child also relates to another person who could be identified from it or the information has been given by another person who could be identified as the source, unless the person has consented to the disclosure or the person providing the information is an employee of the establishment or the Local Authority.
- 23.3 It is best practice to make reports available to the child or their parents unless the exceptions described above apply. If an application is made to see the whole record, advice can be sought from our GDPR advisers, Veritau.
- 23.4 The establishment's report to the child protection conference will (wherever possible) be shared with the child, if old enough, and parent at least two days before the conference.

## **24 Archiving**

- 24.1 The school that the pupil attended until statutory school leaving age (or the school where the pupil completed sixth form studies) is responsible for retaining any child protection records they may hold. The recommended retention period is 35 years from closure when there has been a referral to CSWS. If no referral has been made to CSWS, the child protection record will be retained until the child's

25th birthday, after which point the file will be destroyed confidentially/deleted from our electronic system. The decision of how and where to store child protection files will be made by the school via the governing board. Due to sensitivity of the information, the records will continue to be held in a secure area with limited access e.g. designated officer or headteacher. The DSL is responsible for ensuring that all CP files are archived in accordance with the timescales referenced above. The DSL is responsible for ensuring that the appropriate timeframes for archiving and destroying child protection records referenced above are set on electronic systems accordingly for each pupil.

- 24.2 Safeguarding records which contain information about allegations of sexual abuse will be retained for the Independent Inquiry into Child Sexual Abuse (IICSA), for the term of the inquiry.

## **25 Safe Destruction of the pupil record**

- 25.1 Where records have been identified for destruction, they will be disposed of securely at the end of the academic year (or as soon as practical before that time). Records which have been identified for destruction will be confidentially destroyed. This is because they will either contain personal or sensitive information, which is subject to the requirements of Data Protection legislation or they will contain information which is confidential to school or the Local Education Authority. Information will be shredded (or deleted as appropriate) prior to disposal or confidential disposal can be arranged through private contractors. For audit purposes the school will maintain a list of records which have been destroyed and who authorised their destruction. This can be kept securely in either paper or an electronic format.

## **26 Safeguarding responsibilities for pupils in transition**

- 26.1 In the event that a pupil transitions full-time from a primary setting into a high school setting before the end of their academic school year 6, the high school must place a pupil on their admissions register on the first day that the pupil attends and submit a new starter form to the local authority admissions team. Once the pupil is registered at the new school, the previous school can remove the pupil from their register. All safeguarding responsibilities, including attendance management, for the pupil will transfer to the headteacher and/or the senior designated safeguarding lead of the secondary setting. All child protection files, and risk assessments will be transferred in keeping with the guidance outlined In section 18 of this policy – Child Protection Records

## Appendix 1: Definitions and indicators of abuse

Reference: Working Together to Safeguard Children (DfE 2018). See also KCSiE Part one and Annex B.

**Neglect:** Neglect is the persistent failure to meet a child's basic physical and/or psychological needs, likely to result in the serious impairment of the child's health or development. Neglect may occur during pregnancy as a result of maternal substance abuse. Once a child is born, neglect may involve a parent or carer failing to:

- Provide adequate food, clothing and shelter (including exclusion from home or abandonment)
- Protect a child from physical and emotional harm or danger
- Ensure adequate supervision (including the use of inadequate care-givers)
- Ensure access to appropriate medical care or treatment

It may also include neglect of, or unresponsiveness to, a child's basic emotional needs.

Examples which may indicate neglect (it is not designed to be used as a checklist):

- Hunger
- Tiredness or listlessness
- Child dirty or unkempt
- Poorly or inappropriately clad for the weather
- Poor school attendance or often late for school
- Poor concentration
- Affection or attention seeking behaviour
- Untreated illnesses/injuries
- Pallid complexion
- Stealing or scavenging compulsively
- Failure to achieve developmental milestones, for example growth, weight
- Failure to develop intellectually or socially
- Neurotic behaviour

**Physical abuse:** Physical abuse may involve hitting, shaking, throwing, poisoning, burning or scalding, drowning, suffocating or otherwise causing physical harm to a child. Physical harm may also be caused when a parent or carer fabricates the symptoms of, or deliberately induces, illness in a child.

Examples which may indicate physical abuse (not to be used as a checklist):

- Patterns of bruising; inconsistent account of how bruising or injuries occurred
- Finger, hand or nail marks, black eyes
- Bite marks
- Round burn marks, burns and scalds
- Lacerations, wealds
- Fractures
- Bald patches
- Symptoms of drug or alcohol intoxication or poisoning
- Unaccountable covering of limbs, even in hot weather
- Fear of going home or parents being contacted
- Fear of medical help
- Fear of changing for PE
- Inexplicable fear of adults or over-compliance
- Violence or aggression towards others including bullying
- Isolation from peers

**Sexual abuse:** involves forcing or enticing a child or young person to take part in sexual activities, not necessarily involving a high level of violence, whether or not the child is aware of what is happening. The activities may involve physical contact,

including assault by penetration (for example rape or oral sex) or non-penetrative acts such as masturbation, kissing, rubbing and touching outside of clothing. They may also include non-contact activities, such as involving children in looking at, or in the production of, sexual images, watching sexual activities, encouraging children to behave in sexually inappropriate ways, or grooming a child in preparation for abuse. Sexual abuse can take place online, and technology can be used to facilitate offline abuse. Sexual abuse is not solely perpetrated by adult males. Women can also commit acts of sexual abuse, as can other children.

Examples which may indicate sexual abuse (it is not designed to be used as a checklist):

- Sexually explicit play or behaviour or age-inappropriate knowledge
- Anal or vaginal discharge, soreness or scratching
- Reluctance to go home
- Inability to concentrate, tiredness
- Refusal to communicate.
- Thrush, Persistent complaints of stomach disorders or pains
- Eating disorders, for example anorexia nervosa and bulimia
- Attention seeking behaviour, self-mutilation, substance abuse
- Aggressive behaviour including sexual harassment or molestation
- Unusually compliant
- Regressive behaviour, Enuresis, soiling
- Frequent or open masturbation, touching others inappropriately
- Depression, withdrawal, isolation from peer group
- Reluctance to undress for PE or swimming
- Bruises, scratches in genital area

**Emotional abuse:** Emotional abuse is the persistent emotional maltreatment of a child such as to cause severe and persistent adverse effects on the child's emotional development. It may involve conveying to children that they are worthless or unloved, inadequate, or valued only insofar as they meet the needs of another person. It may include not giving the child opportunities to express their views, deliberately silencing them or 'making fun' of what they say or how they communicate. It may feature age or developmentally inappropriate expectations being imposed on children. These may include interactions that are beyond the child's developmental capability, as well as overprotection and limitation of exploration and learning, or preventing the child in participating in normal social interaction. It may also involve seeing or hearing the ill-treatment of another. It may involve serious bullying (including cyber bullying), causing children frequently to feel frightened or in danger, or the exploitation or corruption of children. Some level of emotional abuse is involved in all types of maltreatment

Examples which may indicate emotional abuse (it is not designed to be used as a checklist):

- Over-reaction to mistakes, continual self-deprecation
- Delayed physical, mental, emotional development
- Sudden speech or sensory disorders
- Inappropriate emotional responses, fantasies
- Neurotic behaviour: rocking, banging head, regression, tics and twitches
- Self-harming, drug or solvent abuse
- Fear of parents being contacted
- Running away / Going missing
- Compulsive stealing
- Masturbation, Appetite disorders - anorexia nervosa, bulimia
- Soiling, smearing faeces, enuresis

N.B.: Some situations where children stop communication suddenly (known as "traumatic mutism") may indicate maltreatment.



**Child Sexual Exploitation:** Child sexual exploitation is a form of child sexual abuse. It occurs where an individual or group takes advantage of an imbalance of power to coerce, manipulate or deceive a child or young person under the age of 18 into sexual activity (a) in exchange for something the victim needs or wants, and/or (b) for the financial advantage or increased status of the perpetrator or facilitator. The victim may have been sexually exploited even if the sexual activity appears consensual. Child sexual exploitation does not always involve physical contact; it can also occur through the use of technology.

Reference: Child Sexual Exploitation. *Definition and a guide for practitioners, local leaders and decision makers working to protect children from child sexual exploitation* (DfE 2017)

All staff should ensure they are aware of and respond to wider safeguarding issues outlined in **KCSiE 2025** Annex B, this includes further information on:

- Child abduction and community safety incidents
- Children and the court system
- Children who are absent from education
- Children with family members in prison
- Child Criminal Exploitation (CCE) and Child Sexual Exploitation (CSE)
- County lines
- Modern Slavery and the National Referral Mechanism
- Cybercrime
- Domestic abuse
- Homelessness
- So-called 'honour-based' abuse (including Female Genital Mutilation and Forced Marriage)
- Preventing radicalisation (including the Prevent duty and Channel)
- Child on child abuse
- Sexual violence and sexual harassment between children in schools and colleges (including Upskirting)
- Mental Health
- Serious Violence

## Responses from parents

Research and experience indicate that the following responses from parents may suggest a cause for concern across all four categories:

- An unexpected delay in seeking treatment that is obviously needed
- An unawareness or denial of any injury, pain or loss of function (for example, a fractured limb)
- Incompatible explanations offered, several different explanations or the child is said to have acted in a way that is inappropriate to her/his age and development
- Reluctance to give information or failure to mention other known relevant injuries
- Frequent presentation of minor injuries
- Unrealistic expectations or constant complaints about the child
- Alcohol misuse or other drug/substance misuse
- Parents request removal of the child from home
- Violence between adults in the household

## **Children with special educational needs and disabilities**

When working with children with special educational needs and disabilities, practitioners need to be aware that additional possible indicators of abuse and/or neglect may also include:

- A bruise in a site that might not be of concern on an ambulant child such as the shin, might be of concern on a non-mobile child.
- Not getting enough help with feeding leading to malnourishment
- Poor toileting arrangements
- Lack of stimulation
- Unjustified and/or excessive use of restraint
- Rough handling, extreme behaviour modification e.g., deprivation of liquid medication, food or clothing, disabling wheelchair batteries
- Unwillingness to try to learn a child's means of communication
- Ill-fitting equipment e.g., callipers, sleep boards, inappropriate splinting.
- Misappropriation of a child's finances
- Invasive procedures

## **Appendix 2 Responding to children who report abuse.**

When a child tells me about abuse s/he has suffered, what must I remember?

- Stay calm
- Do not transmit shock, anger or embarrassment.
- Reassure the child. Tell her/him you are pleased that s/he is speaking to you.
- Never enter into a pact of secrecy with the child. Assure her/him that you will try to help but let the child know that you will have to tell other people in order to do this. State who this will be and why.
- Tell her/him that you believe them. Children very rarely lie about abuse; but s/he may have tried to tell others and not been heard or believed.
- Tell the child that it is not her/his fault.
- Encourage the child to talk but do not ask "leading questions" or press for information.
- Listen and remember.
- Check that you have understood correctly what the child is trying to tell you.
- Praise the child for telling you. Communicate that s/he has a right to be safe and protected.
- Do not tell the child that what s/he experienced is dirty, naughty or bad.
- Do not take photographs or make videos of any injuries reported by a child.
- It is inappropriate to make any comments about the alleged offender.
- Be aware that the child may retract what s/he has told you. It is essential to record all you have heard.
- At the end of the conversation, tell the child again who you are going to tell and why that person or those people need to know.
- As soon as you can afterwards, make a detailed record of the conversation using the child's own language. Include any questions you may have asked. Do not add any opinions or interpretations.

NB It is not education staff's role to investigate reports of abuse. Their role is to observe that something may be wrong, ask about it, listen, be available and respond appropriately.

### **Immediately afterwards**

You must not deal with this yourself. All reports of abuse must be recorded and responded to in keeping with the professional roles and responsibilities outlined in Fig 1a: Summary of in-school procedures to follow where there are concerns about a child (Page 12 )